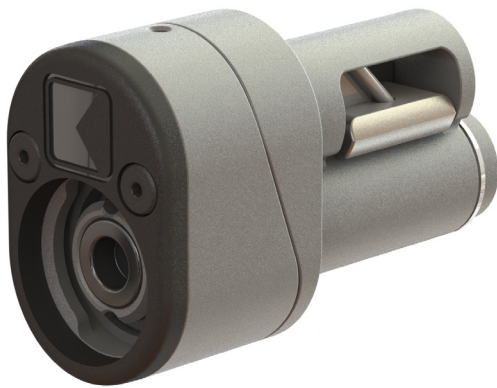


The KnoxLock® Small Format Interchangeable Core (SFIC) is an electronic lock core that takes existing hardware to the next level of access control and accountability. Cylinders are easy to install and provide cost-effective access tracking by retrofitting mechanical cores in most SFIC-compatible locks.

KnoxLock SFIC is engineered for industrial-grade performance in both indoor and outdoor environments. It is highly resistant to dust, dirt, and moisture, offering reliability in even the harshest weather conditions. Powered by the Knox eKey™ it requires minimal maintenance, with no batteries to change or cleaning requirements.

Ideal for rapid access or combined with an online access control system; it delivers entry tracking in a wide range of applications, including offices, storage closets, egress doors, equipment cabinets, retail cases, and other places where wired solutions are impractical or cost prohibitive. It also brings accountability to override keyways - plugging a gap in many access control systems.



KLS-8820L
INDOOR



KLS-8821L
OUTDOOR



FLEXIBILITY

Suitable for both indoor and outdoor environments. Retrofits US standard SFIC cylinders* with no power wiring or batteries required.



SECURITY

Highly secure against most common attack methods.



ACCOUNTABILITY

Audit events are automatically generated in both the key and lock each time an ekey is used for end-to-end traceability.



CONTROL

View and manage locks, locations, and users in the KnoxConnect® Cloud Management System.



RELIABILITY

No battery replacement or contact cleaning required.

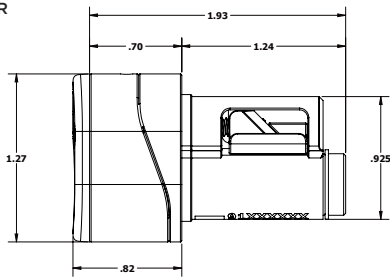


DURABILITY

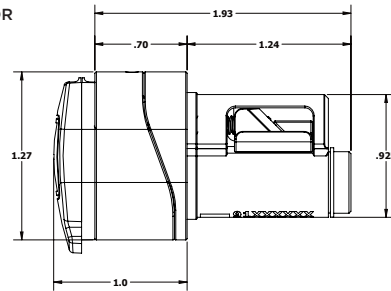
Industry leading 5-year warranty.

KNOXLOCK SFIC CORE SPECIFICATIONS

INDOOR



OUTDOOR



MECHANICAL

Construction	Brass Cylinder Stainless Steel Core
Finish	Cylinder: BHMA 626/US26D Satin Chrome Plug: Matte Black
Cycle Life	100,000+ cycles

ELECTRICAL

Power	Powered by Knox eKey
Storage	120 Transactions
Environmental	Weather, water, and dust resistant
Operating Temperature	-40° to +60° C
Storage Temperature	-40° to +80° C
Humidity	95% RH
Regulatory	Tested to ANSI-BHMA 156.30 to Grade 1A

REQUIRES USE OF KLS-8720K SFIC INSTALLATION KEY

RETROFIT COMPATIBILITY

Compatible for retrofit of SFIC cores in most types of hardware:

- KIK and KIL door hardware
- Cabinet and cam locks
- Rim exit cylinders
- Furniture and showcase locks
- Mortise locks
- Padlocks



ABOUT THE KNOX COMPANY

Since 1975, the Knox Company has successfully developed innovative rapid access solutions for first responders with products that provide fast, safe, and secure entry into commercial, industrial, and residential properties, while minimizing damage and maximizing safety. Today, more than 15,000 fire, EMS, and law enforcement departments/agencies depend on Knox products to gain access into over one million buildings/properties.