

Now available with the electronic Knox eLock Core®, the Electronic Knox Residential Box was developed to secure residential entrance keys for fire, police and medical emergency access to gated communities, single-family residences, and apartment complexes. A door-hanging bracket version of the Electronic Knox Residential Box was developed to conveniently permit emergency medical access during temporary convalescence. Boxes openings are recorded and tracked in the cloud-based KnoxConnect® Management System.

Available in 3 colors:



Door Hanger
Model #1659



Surface Mount
Model #1662

WEIGHT:

Surface Mount: 6.05 lbs.
Door Hanger: 6.65 lbs.

DIMENSIONS:

Surface Mount Body: 4" H x 5" W x 2-3/4" D
Door Hanger: 4" H x 5" W x 2-3/4" D

FEATURES

- ✓ Holds up to 2 keys in interior compartment
- ✓ Knox eLock Core, powered by Knox eKey®
- ✓ Dust cover reflective Knox eLock Core label for Knox eLock System® identification
- ✓ Enables tracking of box openings via cloud-based KnoxConnect®
- ✓ Knox RainGuard® for weather protection
- ✓ Built Knox-Rugged and secured: UL 1037, UL 1332, UL 1610
- ✓ Finished with Knox-Coat® to protect four times better than standard powder coat
- ✓ Weather-resistant door gasket

BENEFITS

- ✓ No wiring or battery needed for power
- ✓ Captures box openings by date and time
- ✓ Allows emergency responders to enter property/home quickly
- ✓ Reduces forced entry property damage
- ✓ Minimizes emergency responder injury
- ✓ Makes re-securing property easier and faster

OPTIONS

- ✓ 3 color options: Black, Aluminum, Dark Bronze
- ✓ Knox Tamper Alert® connects to building's alarm system for extra security
- ✓ Mounting options: Surface mount or door hanger for hanging over 1-7/8" door for temporary applications

ORDERING SPECIFICATIONS

To ensure procurement and delivery of the Electronic Knox Residential Box, it is suggested that the following specification paragraph be used:

Knox Electronic Residential Box surface or door mount. 1/4" plate steel housing, 1/4" thick steel door with interior gasket seal and stainless steel door hinge. Box UL® Listed. The lock has 1/8" thick dust cover with tamper seal mounting capability and a reflective Knox label indicating the Knox eLock System.

Exterior Dimensions: Surface mount: 4" H x 5" W x 2-3/4" D
Door hanger: 4" H x 5" W x 2-3/4" D

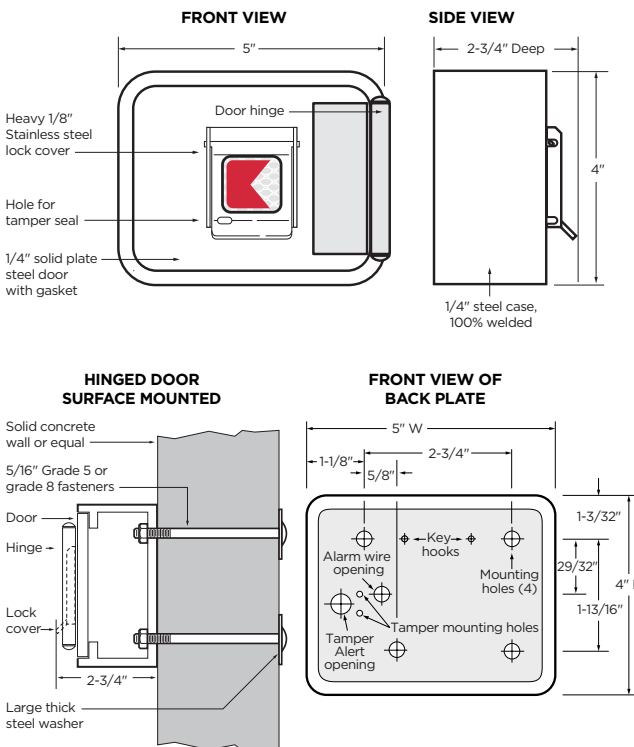
Electronic Lock: Powered by Knox eKey. Communicates using industry standard encryption.

Finish: Knox-Coat® proprietary finishing process

Colors: Black, Dark Bronze, Aluminum

P/N: Knox Residential Box KLS-1650 (mfr's cat. ID)

Mfr's Name: KNOX COMPANY



Note: For commercial applications, see Electronic KnoxBox 3200 or Electronic KnoxVault 4400

ATTENTION:

The Electronic Knox Residential Box is a very strong device that MUST be mounted properly to ensure maximum security and resist physical attack.

ABOUT THE KNOX COMPANY

Since 1975, the Knox Company has successfully developed innovative rapid access solutions for first responders with products that provide fast, safe, and secure entry into commercial, industrial, and residential properties, while minimizing damage and maximizing safety. Today, more than 15,000 fire, EMS, and law enforcement departments/agencies depend on Knox products to gain access into over one million buildings/properties.