

# KNOX® POSTAL KEY KEEPER™

## Secure Building Access for Postal Carriers



The leading high-security KNOX-BOX® has a new design for U.S. Postal Service use. The Knox Postal Key Keeper holds keys, access cards, and other small items necessary for postal access.

The Knox Postal Key Keeper is designed to accept official USPS locks issued and installed by your local postal authority. The key keeper allows postal carriers to retrieve the key to your building and deliver the mail while maintaining proper building security.

*To order, call*  
**(800) 552-5669**  
*or visit [knoxbox.com](http://knoxbox.com)*



### Features

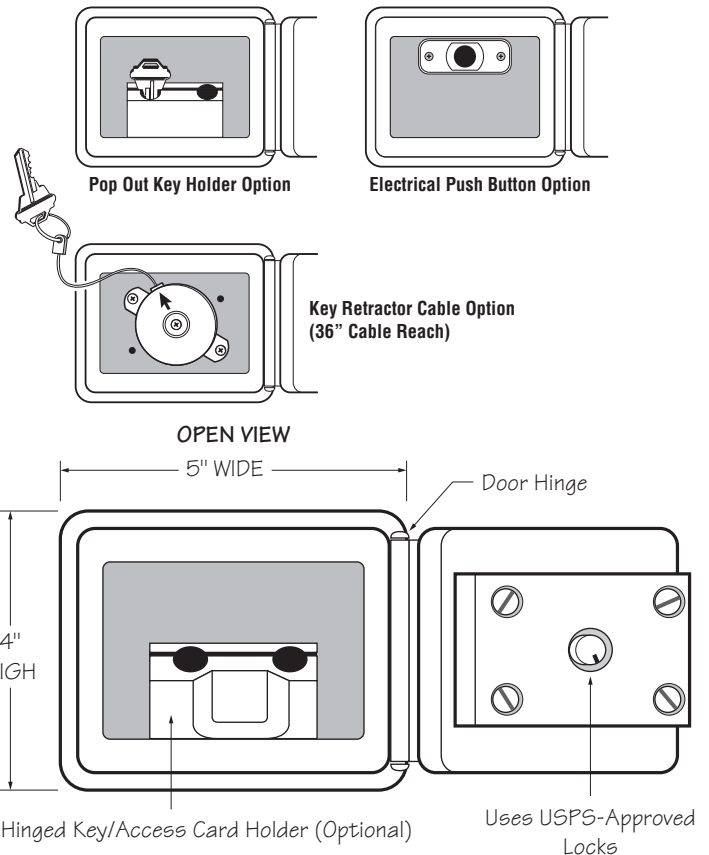
- Accepts all Postal Service Arrow locks
- Hinged door allows for easy access
- Deadbar/backup plate prevents unauthorized entry if hinge is removed
- 1/4" steel shell and 1/2" plate steel door for high security
- Polyester powder coat for extended weather protection

### Benefits

- Protects building security
- Secures lobby entrance key
- Provides convenient building access
- Defends postal lock integrity
- Helps ensure efficient mail delivery

### Three Interior Options

- Spring back key retractor cable
- Pop out key holder that rotates forward when box door is open
- Inside mount electrical push button switch for existing, low voltage (up to 24 volts) building door unlocking system



Color: Warm gray  
Weight: 9 lbs.