

MedVault®

Smaller Capacity – Narcotics Locker Hardware Installation Guide



Warning

Treat this manual as a *confidential document*.
Limit access to authorized personnel.



1601 W. Deer Valley Road, Phoenix, AZ 85027
Phone: 800-552-5669 • Fax: 623-687-2299
www.knoxbox.com

OPE-MVHDWR-0203-F

Copyright © 2019 by The Knox Company. All rights reserved.

The Knox Company, the Knox logo and all other Knox Company product or service names are registered trademarks or trademarks of the Knox Company.

Restricted Rights Legend

U.S. GOVERNMENT RESTRICTED RIGHTS. UNPUBLISHED—RIGHTS RESERVED UNDER THE COPYRIGHT LAWS OF THE UNITED STATES. Use, duplication, or disclosure is subject to restrictions set forth in the FAR Section 52.227-14 Alt. III(g)(3), FAR Section 52.227-19, DFARS 252.227-7014(b), or DFARS 227.7202, as amended from time to time.

The Knox Company

1601 W. Deer Valley Road
Phoenix, AZ 85027, USA
(800) 552-5669 General Information
(866) 566-9269 Electronic Support
(623) 687-2290 Fax

Contacting the Knox Company, Limited Warranty and Order Terms and Conditions

You can access the Knox Company web site at <http://knoxbox.com>. From this web site, you can obtain general information about the company, customer support, products and career opportunities. You can also register and log into the system to obtain software updates and new manuals. Your installation and use of the product is subject in all respects to Knox's limited warranties for products and Knox's Order Terms and Conditions which are also available at <http://knoxbox.com>.

Important Information for MedVault WiFi Units

FCC NOTICE

The RF module contained within this device complies with the rules set forth in Part 15 by the Federal Communications Commission. Operation is subject to the following conditions:

1. This device may not cause harmful interference.
2. This device must accept any interference received, including interference that may cause undesired operation.
3. An approved antenna must be directly coupled to the module's RP-SMA connector.
4. The module must not be modified in any way. Coupling of external circuitry must not bypass the provided connectors.
5. The antenna used for this transceiver must not be co-located or operated in conjunction with any other antenna or transmitter.

Any changes or modifications could void the user's authority to operate the equipment.

This Class B digital apparatus complies with Canadian ICES-003.

Cet appareil numérique de la classe B est conforme à la norme NMB-003 du Canada.

This Device Contains: FCC ID: R68MTCHDRCT, IC ID: 3867A-MTCHDRCT or
FCC ID: YOPGS2100MIE, IC ID: 9154A-GS2100MIE. Refer to product label to determine
which module is installed.

Contents

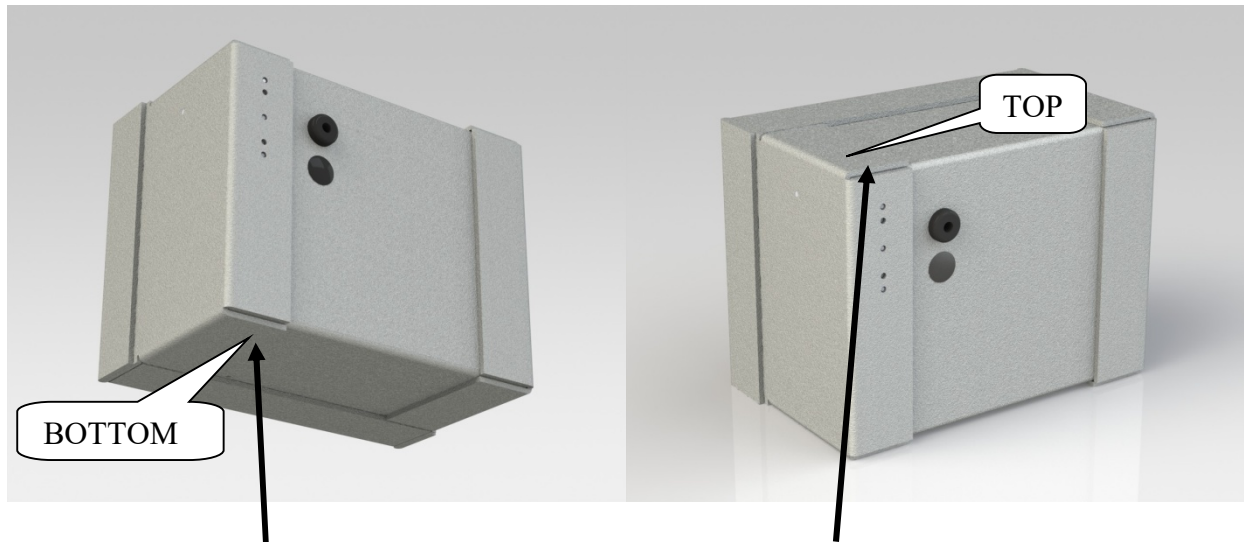
Installing the MedVault® Unit	2
Installing the Hardware	2
Mounting Options	3
Installing the Electronics	4
Specifications	5
Contacting Electronic Support	6
Removing the Door	6
Attaching the Door	8
Index	10

Installing the MedVault® Unit

Please thoroughly read all instructions before mounting the MedVault™ unit.

Although the MedVault® unit is manufactured to provide secure storage of medical narcotics, follow these installation instructions for maximum security.

Determine the mounting location. Be certain there is adequate space to open and close the MedVault® door. Allow a minimum of 1 inch above the door for room to remove the door from the MedVault. (see page 6) The door has to be able to open at least 90° to allow door removal.



Warning

Only drill mounting holes in the reinforced areas along the edges (as indicated above).

Placing mounting holes in any other location may warp the unit and cause failures.

Installing the Hardware

Because we do not know how or where our customers will be installing the MedVault® unit, it is not pre-drilled and does not include mounting hardware.

Assemble the following hardware and equipment:

- Four (4) quarter-inch (1/4") bolts and washers
- Drill and bit
- Center punch

We recommend the following mounting guidelines:

1. Insert bolts from the inside of the unit.
2. Place mounting holes on the edge of the unit back, bottom or top, where the unit construction is reinforced.
3. Place the mounting holes at least three-quarters of an inch (3/4") from the edge of the unit.
4. Use a center punch to start the mounting holes.
5. Ensure that the cable is not pinched or pulled during mounting, and it will not be damaged during operation.
6. Make sure the mounting holes do not interfere with any component inside the box.
7. *Do not mount anything to the MedVault® door.*
8. *Do not use a hammer to fit the unit in place.* Doing so may warp the unit.
9. *Do not over-tighten the mounting bolts*—it will distort the flange and may warp the unit.
10. Clean up shavings after drilling the mounting holes.
11. *Do not mount the unit face-down from a ceiling or overhang area.*
12. The door hinge of the mounted unit must be on the right.
13. When the door is open, it should not rest on any surface.
14. If you install the unit on a thin or hollow wall/surface, use a solid backing for reinforcement.
15. We recommend mounting the unit to solid studs or steel supports.

Mounting Options

Surface-mounted models are designed for mounting on a flat wall or surface.

Recess-mounted models are designed for flush mounting. You can adapt the unit to fit a variety of wall or compartment types.

Installing the Electronics

Wire Connection Table	
Red	+12 Volts DC
Black	Ground

Assemble the following tools and supplies:

- Electrical tape
- Wire stripper

Follow these steps to install the MedVault® electronics:

1. Establish the desired location of the unit in the vehicle.
2. Determine the source of the MedVault® power. Ensure that the power supply is filtered, fused and capable of supplying three (3) amps.
3. Run the supplied 2-conductor cable to the power connection.
4. Connect the black wire in the ten-foot (10') cable to ground.
5. Connect the red wire to a 12-volt power source.
6. Ensure that the power can be turned off with the vehicle's master power switch.
7. If you are connecting the unit with continuous power:
 - A. *First*, connect ground to the black wire.
 - B. *Second*, power +12 volts to the red wire.
8. Test the installation by turning on the power. The keypad should be lighted and a banner should scroll above it, displaying the time, date, and door status.
 - A. Enter a PIN code.
 - B. The MedVault should unlock, allowing you to turn the knob from the vertical position to the horizontal position.
9. You or your administrator can set the MedVault® date and time from the laptop PC containing the MedVault® software.
10. Congratulations! You have successfully installed the hardware and electronics.

Note: The MedVault® contains a polarity diode to prevent damage to the unit if the wires are attached in reverse.

Specifications

Hardware	
Weight	Approximately twelve (12) pounds
Exterior Dimensions	6 ¾" Height X 9" Width X 5 ¼" Depth
Interior Dimensions	6 ¼" Height X 8 ½" Width X 3" Depth
Versions	<ul style="list-style-type: none">• Surface mount• Recessed version (one-inch flange around the box perimeter)
4-Pin Din Connector	USB port, which collects Audit Trail history information. It also downloads new configuration information into the box, such as PIN codes.
RP-SMA Connector	Connect a WiFi antenna for wireless network if equipped.
RJ-45 Dongle	Connect a Cat5 Ethernet cable for wired networking if equipped.
Override Manual Key	If the electronics fail or the vehicle loses power, the unit can ONLY be opened using the manual override key. For security purposes, the manual override key is shipped separate from the unit. If you do not receive your manual override key, contact Knox immediately.

Electronics	
Temperature Range	-40° C to +80 ° C (-40 ° F to 176V F)
Power Supply Input Range	10 to 15 volts DC @ 3 amps
Current Drain (Standby)	120 milliamps
Current Drain (Door Release)	Up to 3 amps
Current Drain (Door Open)	150 milliamps
Initial Power Stabilization Time	5 seconds
Absolute Max Input	20 volts DC

Contacting Electronic Support

If you experience difficulties with the MedVault® unit that are not addressed in this literature, please call Knox Electronic Support at **(866) 566-9269**. Our technicians will review your issues and attempt to resolve them over the phone.

Please, do not return the MedVault® or any parts without first calling Support. By calling Support, we may be able to resolve any difficulties without you having to send the unit or parts to us. If you do have to make a return, our technicians can:

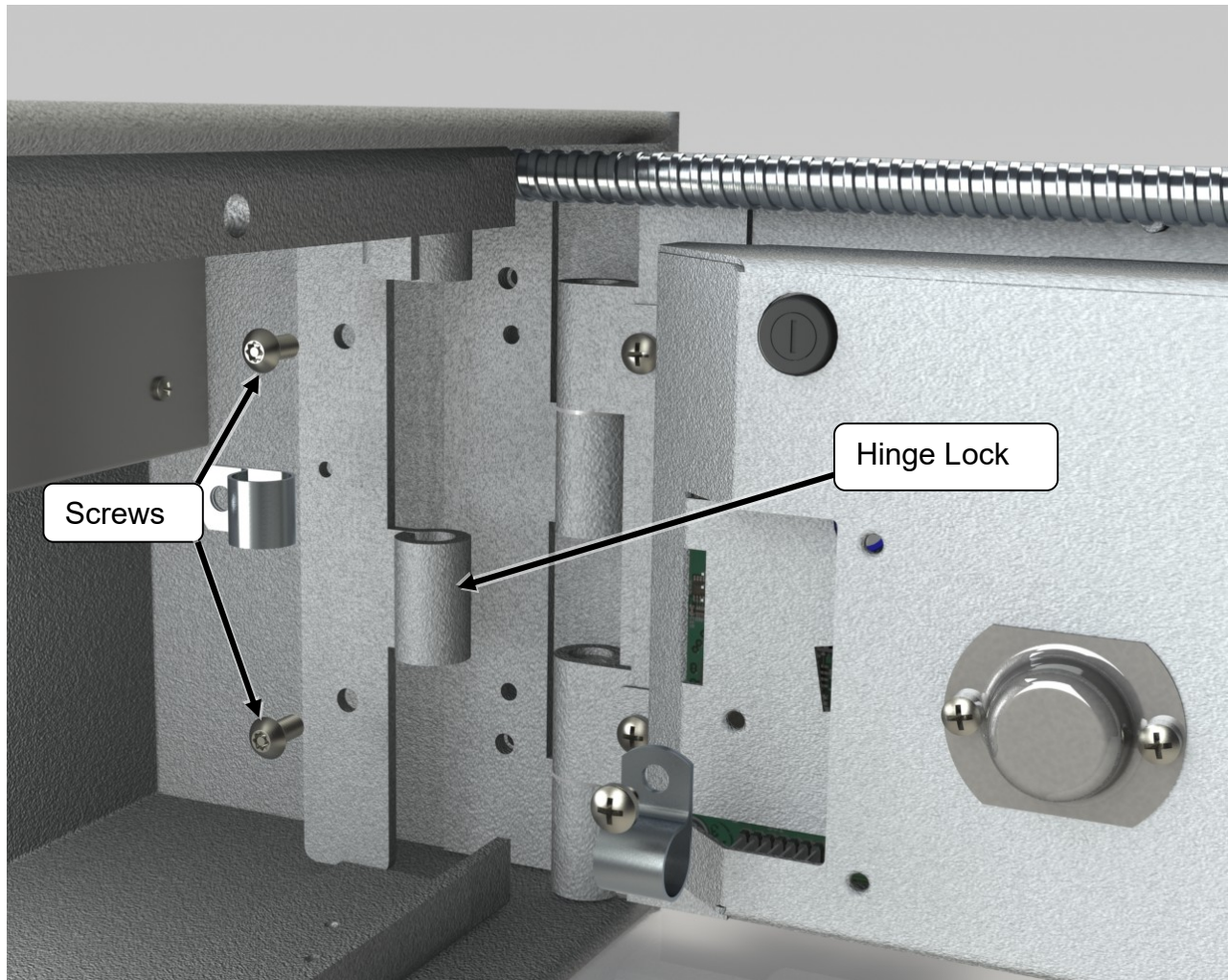
1. Assign an RMA number so we can track your unit.
2. Provide the correct mailing address.
3. Provide customized help for your particular issue.

We take pride in our products and endeavor to keep our customers satisfied. We provide a support staff who does an outstanding job of providing our customers with prompt, courteous service.

Removing the Door

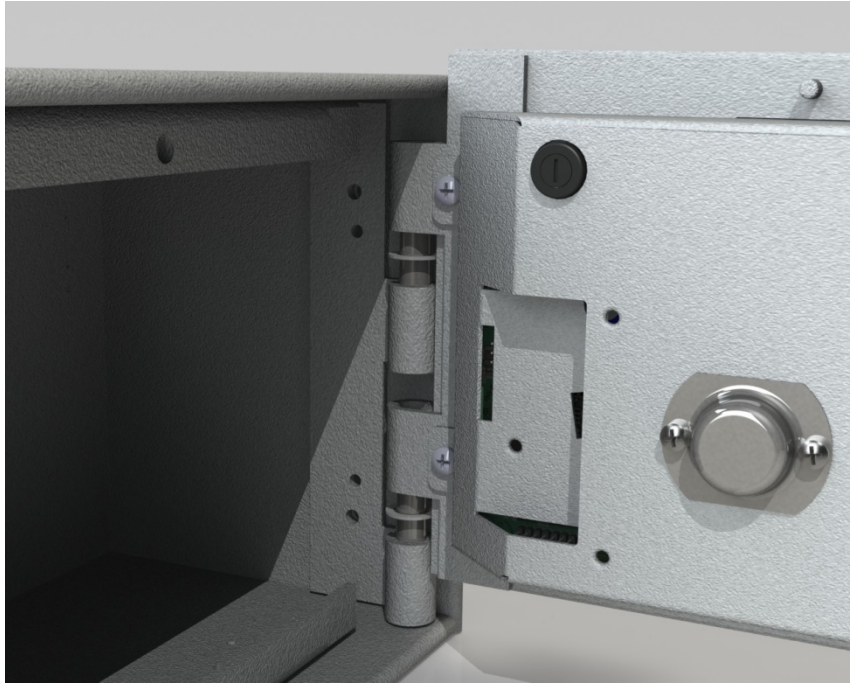
You have the capability of removing the door if comprehensive servicing is needed and you need Knox to service your MedVault. Perform the following steps to remove the door on your MedVault.

1. Open the door with a PIN code. If you are unable to do so:
 - A. Turn off power to the unit.
 - B. Open the door with the override key.
2. Use a screwdriver to remove the wire access panel.
3. Disconnect the coax connector (if WiFi equipped) and the Microfit connector.
4. Use the Knox security screw removal bit to unscrew the two screws in the hinge lock.



5. Pull the hinge lock away from the hinge. Set aside the hinge lock and screws for safe-keeping.

6. Slide the door up and pull toward you to remove the door from the hinge pins.



7. Reattach wire access panel with screws to door for shipping.
8. If a replacement door is long in coming; reattach the hinge lock to the door with the two security screws, tightened finger-tight, for safe-keeping.
9. Retain the Knox security screw removal bit for reassembly.

Attaching the Door

Follow these instructions when you are ready to attach the replacement door to the MedVault:

1. Remove the temporarily attached hinge lock by removing the two security screws (if attached).
2. Position the door, interior side facing left, hinges facing away from you, with the hinge knuckles just above and touching the hinge pins.
3. Push the knuckles in and down to slip the knuckles over the two hinge pins simultaneously. A rubber mallet may be used to assist sliding the door on the pins. Avoid using metal tools as these could damage the door and affect door security.
4. Reinstall the hinge lock by placing it back in its original position, with its knuckles inserted between the door hinge knuckles.
5. Install the hinge lock security screws and finger-tighten.

6. Use the Knox security screw removal bit to further tighten the security screws. DO NOT OVER-TIGHTEN.
7. Use a screwdriver to open the door wire cover.
8. Reconnect both halves of the coax cable and Microfit connector (if so equipped).
9. Secure the cables inside the door wire cover insuring that the wires are not kinked.
10. Use a screwdriver to close the door wire cover.
11. Close the door, energize the unit, and verify the keypad lights up and the scrolling LED is operational.
12. Keep the Knox Security Bit in a secure location.

Index

+

+ 12 volts4

1

10-foot cable4

2

2-conductor cable.....4

4

4-Pin Din connector5

A

Absolute max input.....5

antenna..... ii, 5

Audit Trail5

B

Black wire.....4

C

Configuration information5

Contact Information ii, 6

Continuous power4

Copyright ii

Current drain

 Door open.....5

 Door release.....5

 Standby.....5

D

Date4

Dimensions

 Exterior.....5

 Interior.....5

E

Electrical installation4

Electronic Support ii, 6

Electronics specifications5

Exterior dimensions5

G

Ground.....4

H

Hardware installation 2

Hardware specifications 5

I

Initial power stabilization time..... 5

Input, absolute maximum 5

Install

 Electronics 4

 Hardware..... 2

 MedVault 2

 Surface-mounted units 3

Interior dimensions..... 5

K

Key 5, 6

O

Override key 5, 6

P

PIN codes 4, 5, 6

Power supply 4

Power supply input range 5

R

Range

 Power supply input 5

 Temperature 5

Recessed mount..... 5

Red wire 4

S

Specifications 5

 Electronics 5

 Hardware..... 5

Support..... 6

Surface mount 5

Surface-mounted units..... 3

T

Technical Support 6

Temperature range..... 5

Time 4

V

Versions	5
Recessed	5
Surface mount	5

W

Weight	5
Wire connection table	4