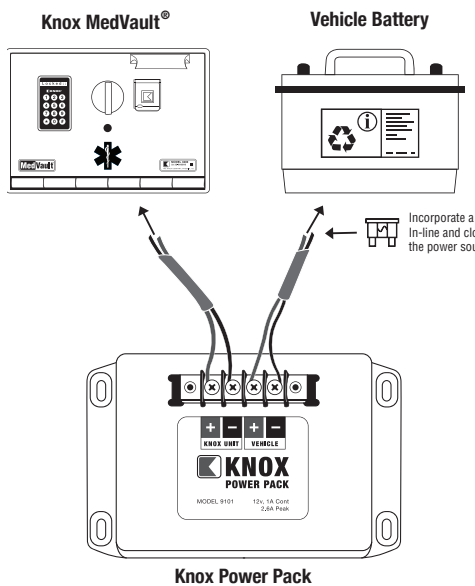




The Knox Power Pack is installed between the 12V power source and a Knox MedVault® unit. It contains a battery which provides temporary backup power to the Knox unit when the main 12V power source is removed or inoperable. The Power Pack has internal charging electronics which maintain the backup battery at an optimal charge level for up to 30 minutes.



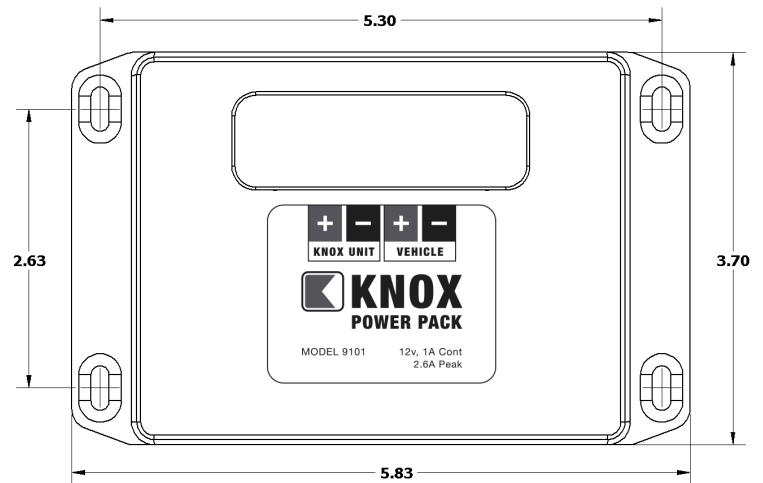
Power Pack Connected

Notes: For best results, the Power Pack should be visibly mounted close to Knox MedVault (Recommend positioning from 1 to 2 feet away from MedVault.)

The Power Pack vehicle terminals should be wired directly to the vehicle power source with a 5A fuse in-line.

Knox® Rapid Entry System

The Knox Company manufactures a complete line of high security products including Knox-Box key boxes, key vaults, cabinets, key switches, padlocks, locking FDC plugs and caps and electronic master key security systems. For more information or technical assistance, please call Customer Service at 1-800-552-5669.



Front View – 9101 Power Pack

Specifications

Exterior Dimensions	3 5/8" height x 5 3/4" width x 1 3/8" depth
Weight	1.4 lbs
Electrical Connection	4 position Terminal Block (accepts wire from 14 to 22 AWG)
Operating Temperature	-20 °C to +50 °C (-4 °F to 122 °F)
Input Voltage Range	12 to 15 volts DC
Current	1.0A Continuous current 2.6A Peak current
Internal Battery	Lead-Acid Battery

Ordering Specifications

To ensure procurement and delivery of the Knox Power Pack, it is suggested that the following specification paragraph be used:

KNOX Power Pack backup power supply for Knox MedVault Narcotics Lockers. Provides 1.0A continuous current and 2.6A peak current to operate Knox MedVault in the event the 12V power source is removed or inoperable.

Exterior Dimensions: 3-5/8" H x 5-3/4" W x 1-3/8" D
 Finish: Powder coating
 Finish Color - Grey
 P/N: Knox Power Pack (mfr's cat. ID 9101)

Mfr's Name: **KNOX COMPANY**